



Plymouth

CONGREGATIONAL CHURCH

June 26, 2022 • 9 a.m.

GATHERING MUSIC

OUR LOVE IS HERE TO STAY

George Gershwin

OPENING SONG

ALL ARE WELCOME
(see next page)

“Two Oaks”

WELCOME

Seth Patterson

PEACE CANDLE

SUNG RESPONSE

PUT PEACE INTO EACH OTHER’S HANDS
(see page after next)

“St. Columba”

PASSING OF THE PEACE

SCRIPTURE READING

GENESIS 11:1–9

Howard Dixon

We continue our “Command to Preach” series, in which our membership selects the scripture, with a selection by Howard Dixon, who writes, “I am sometimes curious and amused by the stories in the Old Testament and how they have survived centuries of interpretation, translations, and many languages and are still somehow part of our scriptures. I’m picking on the Tower of Babel story, which on the surface doesn’t seem to have a positive message that we can learn from. To me, it seems to be saying that God doesn’t want humans to get too big for their britches and that working together and communication are somehow a bad thing. I was raised in an extreme fundamentalist setting, and in that world every word in the Bible was directly inspired by God and thus really happened. More likely, whether these myths—written by whomever—stayed in scripture or not was determined by committees (majority vote? unanimous?). I wonder what their motivation and intention was in leaving the Tower of Babel in.

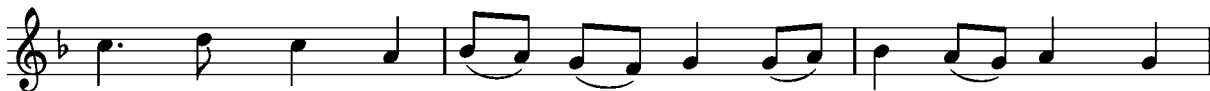
ALL ARE WELCOME

Marty Haugen, b. 1950

TWO OAKS 9.6.8.6.8.7.10 with refrain
Marty Haugen, b. 1950



1. Let us build a house where love can dwell and all can safe-ly live, A
2. Let us build a house where hands will reach be - yond the wood and stone To
3. Let us build a house where all are named, their songs and vi - sions heard And



place where saints and chil - dren tell how hearts learn to for -
heal and strength-en, serve and teach, and live the Word they've
loved and treas - ured, taught and claimed as words with - in the



give. Built of hopes and dreams and vi - sions, rock of faith and vault of
known. Here the out - cast and the stran-ger bear the im - age of God's
Word. Built of tears and cries and laugh-ter, prayers of faith and songs of



grace; Here the love of God shall end di - vi - sions: All are wel-come,
face; Let us bring an end to fear and dan-ger:
grace, Let this house pro-claim from floor to raft - er:



all are wel - come, all are wel - come in this place.

Put Peace into Each Other's Hands

Fred Kaan (1929-2009)

ST. COLUMBA 8.7.8.7.



1 Put peace in - to each oth - er's hands and like a
2 Put peace in - to each oth - er's hands with lov - ing
3 Put peace in - to each oth - er's hands, like bread we



treas - ure hold it; pro - tect it like a
ex - pec - ta - tion; be gen - tle in your
break for shar - ing; look peo - ple warm - ly



can - dle flame, with ten - der - ness en - fold it.
words and ways, in touch with God's cre - a - tion.
in the eye: our life is meant for car - ing.



MESSAGE

BLESSING/BREAKDOWN

Seth Patterson

MUSICAL RESPONSE

WE SHALL OVERCOME

Charles Albert Tindley

PRAYERS OF THE PEOPLE

THE LORD'S PRAYER

Tender, loving God, who art in heaven, hallowed be thy name. Thy kingdom come, thy will be done, on earth as it is in heaven. Give us this day our daily bread, and forgive us our debts as we forgive our debtors. And lead us not into temptation, but deliver us from evil, for thine is the kingdom, and the power, and the glory for ever. Amen.

CLOSING SONG

THE LOVE BURNING DEEP
(see next page)

Ernest Sands
words by Kathy Galloway

BLESSING

POSTLUDE

DEARLY BELOVED

Jerome Kern



ALA TAKE FIVE ♩ = 142

THE LOVE BURNING DEEP

E. SANDS/K. GALLOWAY

ARR. LAURA CAVIANI

E- B-7

The piano introduction consists of two staves. The right hand plays chords in the treble clef, and the left hand plays chords in the bass clef. The key signature is one sharp (F#). The first measure has a 4/4 time signature. The first two measures are marked with 'E-' and 'B-7' respectively. The following three measures are marked with a double bar line and a repeat sign. The word 'SIMILE' is written in the bottom right corner of the piano part.

E- B-7 E- B-7 E- D G B-7

The first vocal line starts at measure 5. It features a melody in the treble clef with lyrics underneath. The chords E-, B-7, E-, B-7, E-, D, G, and B-7 are written above the notes.

5 Come out of the dark-ness, come out of the sha-dow, come out of the end-less night,

E- B-7 E- B-7 E- B-7 E- B7

The second vocal line starts at measure 9. It continues the melody with lyrics. The chords E-, B-7, E-, B-7, E-, B-7, E-, and B7 are written above the notes.

9 all you who are poor now, all you who are bro-ken, all you who are bowed by light.

A-7 D G7 B7(6,9) F#-7(6,5) B7 E- E7

The third vocal line starts at measure 13. It continues the melody with lyrics. The chords A-7, D, G7, B7(6,9), F#-7(6,5), B7, E-, and E7 are written above the notes.

13 Come in - to the light of God's sa-cred in-ten-tion come un-der the shel-ter of her hand,

A-7 D G7 B7(6,9) F#-7(6,5) B7

The fourth vocal line starts at measure 17. It continues the melody with lyrics. The chords A-7, D, G7, B7(6,9), F#-7(6,5), and B7 are written above the notes.

17 here you may find rich - es, here you may find heal - ing here now you may rise and

RIT. LAST X

The piano conclusion starts at measure 20. It features a melody in the treble clef and chords in the bass clef. The word 'stand.' is written in the treble clef. The key signature is one sharp (F#). The piece ends with a double bar line and a repeat sign. The word 'RIT. LAST X' is written above the piano part.

© 1981, ERNEST SANDS, OCP PUB.

THIS ARRANGEMENT MADE FOR PLYMOUTH CONGREGATIONAL BY LAURA CAVIANI

2022

PLYMOUTH CONGREGATIONAL CHURCH GRATEFULLY ACKNOWLEDGES that we are on the sacred traditional territory of the Dakota people. It is an honor to live, pray, seek justice, and create community alongside Dakota, Ojibwe, and other Indigenous people in the Twin Cities.

CHANCEL FLOWERS are given in loving memory of Terry and Ruth Hanold from Ruth, Doug, Cathy, and Mike Crane.

ANNOUNCEMENTS are available on the church website.

WORSHIP STAFF: DeWayne L. Davis, *Lead Minister*; Beth Hoffman Faeth, *Minister for Congregational Care & Worship*; Seth Patterson, *Minister for Spiritual Formation & Theater*; Philip Brunelle, *Organist and Choirmaster*; Marie Scholtz, *Associate Music Director & First Service Music Coordinator*; Laura Caviani, *First Service Trio Director*; Cody Bourdot, *A/V Production Manager*; Chris Bohnhoff, *Digital Ministry Specialist*

JAZZ TRIO: Laura Caviani, *piano*; Chris Bates, *bass*; Daryl Boudreaux, *percussion*
TRIO ARRANGEMENTS: Laura Caviani

CHURCH REGISTER

RECENT BIRTH

Jackson Michael Evans (June 17, 2022), Katie & Mike Evans, *parents*; Sheri Sheeks and Michael Sheeks, *grandparents*; Martin Sheeks, *uncle*

RECENTLY HOSPITALIZED

Wes Bue, *Methodist Hospital*

CONVALESCING

Marilyn Wahlberg, *Saint Therese of Woodbury* (Please reach out to the family before visiting.)

UPCOMING MEMORIAL

A service for Charlie Lloyd will be held at Plymouth on Saturday, July 2, at 3 p.m.

HOME AND HOSPITAL VISITS: Plymouth's ministers call upon members of the church in their homes, in hospitals or care and rehabilitation centers. If you know of someone who would like a visit from a minister, please contact Rev. Beth Hoffman Faeth (612/871-7400).

